

VIBRANT HUMMINGBIRDS

SUPPLIES & LINE DRAWINGS



WILLOW WOLFE™

Basic Supplies and Palette

BASIC PROJECT SUPPLIES

- Palette knife
- Palette
- Paper towels
- Stylus
- Tracing paper
- Lazy Susan (optional)
- White transfer paper
- Black, Dark, Medium and Light Green acrylic for basecoats
- Small glass water container
- 4" High Density Foam Roller

WATER MIXABLE OIL PROJECT PALETTE

- Titanium White
- Yellow Light
- Pyrrole Red (Red Medium)
- Ultramarine Blue
- Madder Lake
- Sap Green
- Permanent Red Violet
- Permanent Blue Violet
- Prussian Blue
- Turquoise
- Ivory Black

ACRYLIC BASECOATS

I use acrylics to basecoat my surfaces. You can use a variety of brands such as Amsterdam, DecoArt or FolkArt. Acrylic basecoats dry much faster than water mixable oil. Once dry, you can transfer your design and continue with water mixable oil. In these projects I foam roller on a basecoat of green values to give a mottled effect.

WATER MIXABLE OIL

I use Cobra Water Mixable Oil by Royal Talens for painting my projects. Cobra contains rich pigment, has no odor and is a creamy consistency. The paint is completely water mixable which means no solvents or thinners. I use water as a painting medium and to clean the brushes. .



Brushes

CALLIA™

Brushes are the tools you use to create your art, and it is essential to purchase quality brushes such as Willow Wolfe's **CALLIA™** Mixed Media Brushes. Inspired by traditional brush-making practices and the pursuit of new synthetics, **CALLIA™** is about the balance of invention and precise craftsmanship.

- **CAPTURES COLOR AND RELEASES WITH CONTROL**
- **DETAILED ARTISAN CARE AND CRAFTSMANSHIP**
- **CRUELTY-FREE 100% SYNTHETIC**

BRUSHES FOR THIS CLASS



10/0 LINER & 18/0 SHORT LINER

Use for fine lines and details.

0, 2, 4, 6, 8 CHISEL BLENDERS

Chisel blenders are similar to a flat brush but have shorter bristles. Shorter bristles allow for better control and a sharp chisel edge, yet are supple enough to blend softly.

#4 OR #6 FLAT BRUSH

The wash brush is for covering larger areas, basecoating, and applying soft layers of color.

BRUSH TIPS AND CARE

- Never allow paint to dry in the bristles.
- Do not allow your brush to rest in the water container. Laying the brush bristles-down for a period of time will cause the bristles to lose shape and will affect performance.
- Use Palmolive or Murphy's Oil Soap clean your brushes. As you clean, blot your brush on paper towel to remove excess water and color. When the brush is completely clear of paint, use a bit of soap to reshape the bristles.
- Store your brushes upright.

SUPPLIES

HUMMINGBIRD & FUCHSIA

LEVEL

Intermediate

SURFACE

9x12 MultiMedia Artboard

ACRYLIC BACKGROUND

Black, Light Green, Medium Green and Dark Green

WATER MIXABLE OIL PALETTE

Titanium White

Yellow Light

Red Violet

Blue Violet

Ultramarine Blue

Prussian Blue

Turquoise

Sap Green

Ivory Black

BRUSHES

CALLIA Artist Brushes

#0, #2 #4, #6 and #8 Chisel Blender

10/0 Liner & 18/0 Liner

1" Wash

OTHER SUPPLIES

White transfer paper

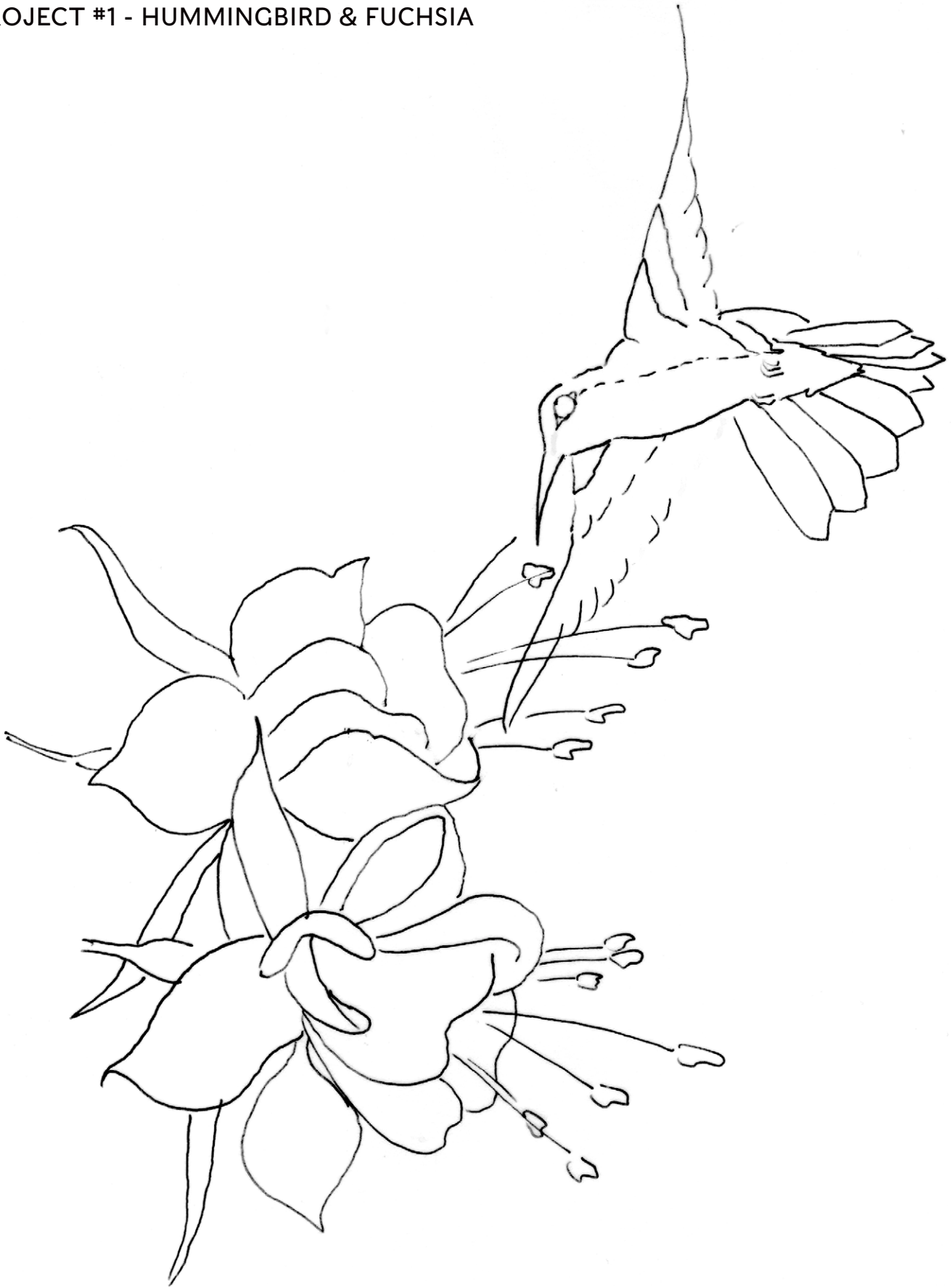
4" Foam Roller

Stylus



LINE DRAWINGS

PROJECT #1 - HUMMINGBIRD & FUCHSIA



Enlarge or reduce the pattern to suit your surface size.

SUPPLIES

HUMMINGBIRD & ORANGE BLOSSOM

LEVEL

Intermediate

SURFACE

9x12 MultiMedia Artboard

ACRYLIC BACKGROUND

Black, Light Green, Medium Green and
Dark Green

WATER MIXABLE OIL PALETTE

Titanium White

Yellow Light

Red Violet

Blue Violet

Ultramarine Blue

Prussian Blue

Turquoise

Sap Green

Ivory Black

BRUSHES

CALLIA Artist Brushes

#0, #2 #4, #6 and #8 Chisel Blender

10/0 Liner & 18/0 Liner

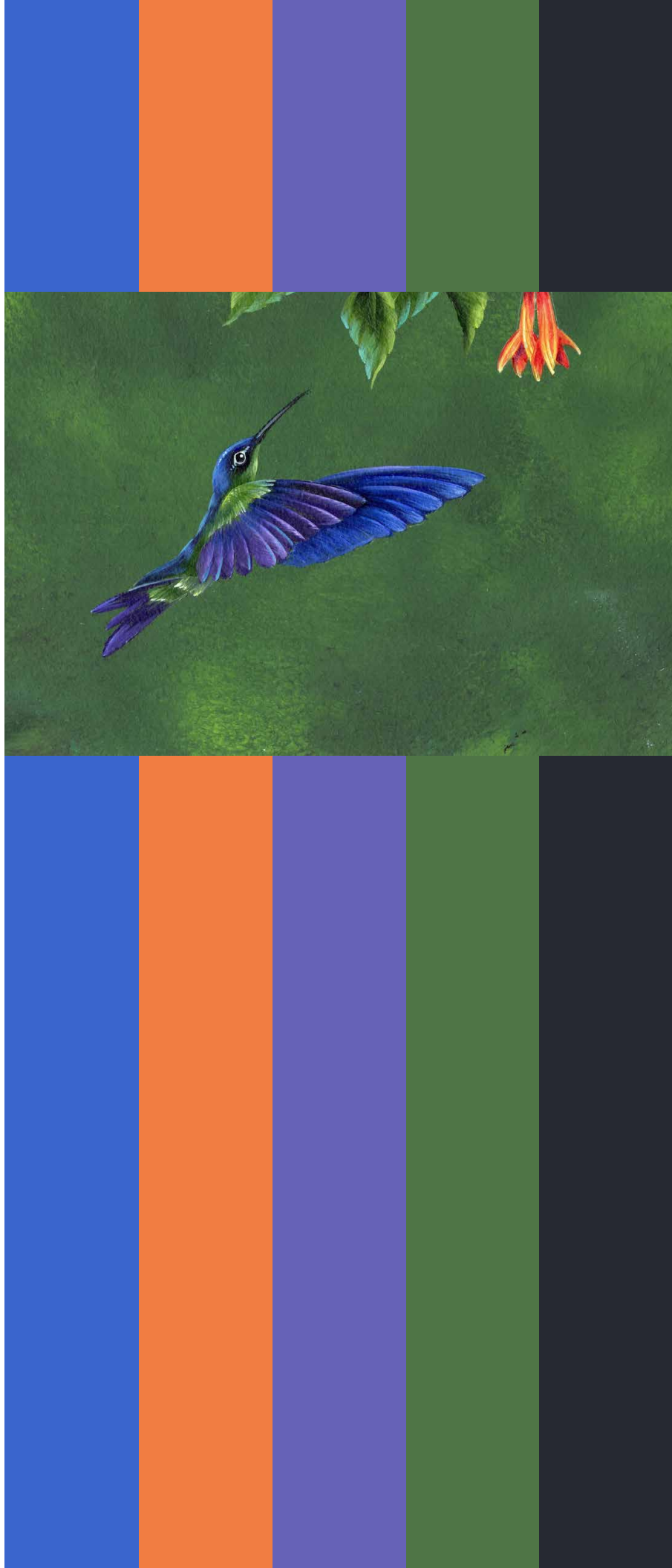
1" Wash

OTHER SUPPLIES

White transfer paper

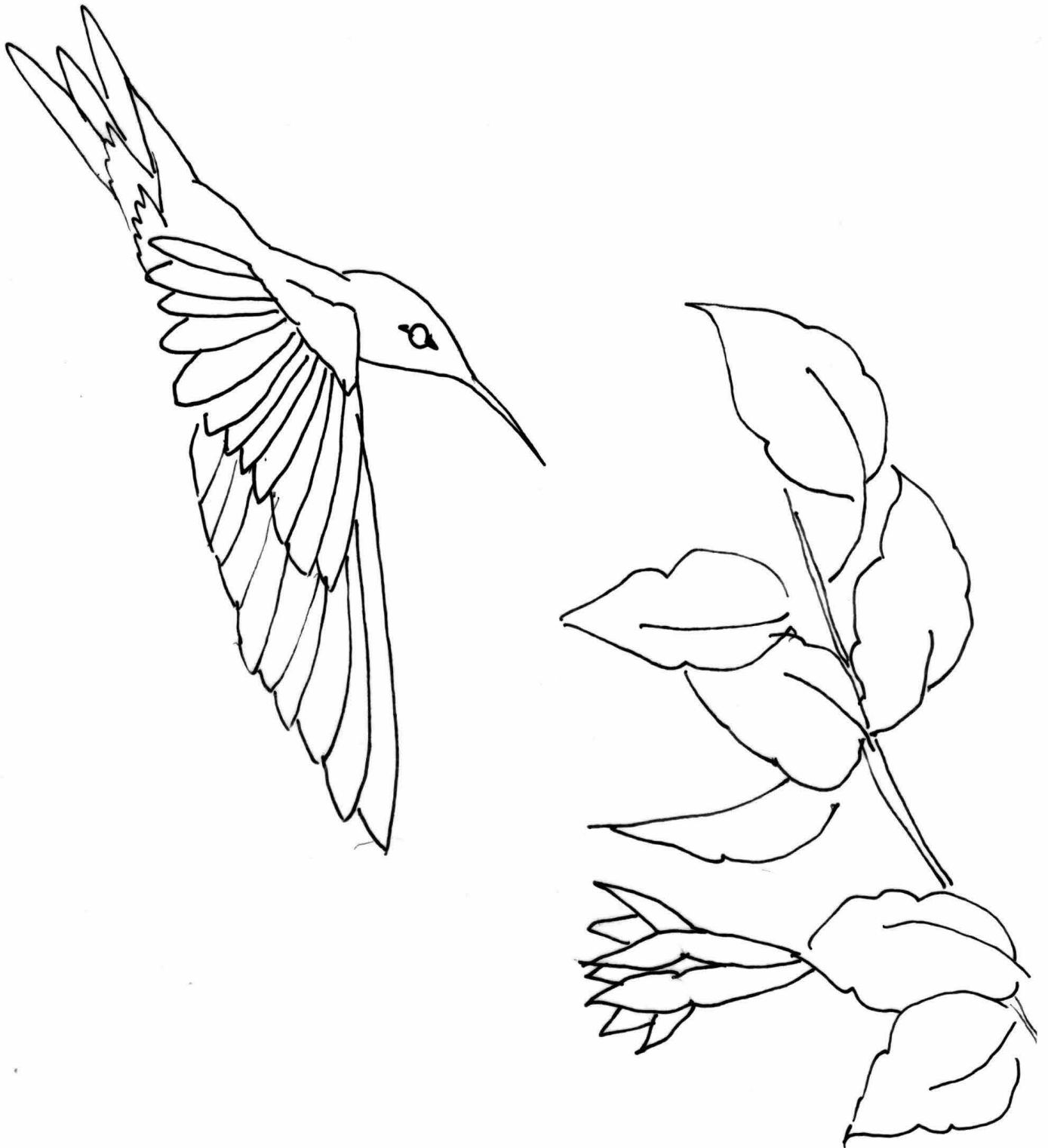
4" Foam Roller

Stylus



LINE DRAWINGS

PROJECT #2 - HUMMINGBIRD & ORANGE BLOSSOM



Enlarge or reduce the pattern to suit your surface size.



CREATED BY ARTIST
WILLOW WOLFE™



FIND OUT MORE AT
WILLOWWOLFE.COM

WILLOW WOLFE INC. ©2020

Callia™, Willow Wolfe™, Awaken The Artist™, Dodo™, Moa™, What Does That Brush Do?™ and The Right Brush™ are trademarks used under license.