

QUICK AND EASY PAINTING™

SOFT & PRETTY FLOWERS



2 BEAUTIFUL FLOWER PROJECTS
TO TRACE AND PAINT

WILLOW WOLFE™



ABOUT Willow Wolfe

Willow Wolfe is widely recognized for challenging and modernizing today's world of art supplies and education. An award-winning art teacher and the author of a library of internationally available learn to paint books and articles, her approachable style and step-by-step painting methods have taken her to events, seminars and engagements across the globe. Discover more about Willow Wolfe at WWW.WILLOWWOLFE.COM



Supplies and Palette

BASIC PROJECT SUPPLIES

- Palette knife
- Palette
- Paper towels
- Stylus (optional)
- Tracing paper
- Tape, eraser and pencil
- Lazy Susan (optional)
- Clipboard (optional)
- Gray transfer paper
- White and Black Acrylic for preparing surfaces
- Small glass water container
- Surfaces of choice may include Multimedia Artboard, oil paper, canvas or greeting cards

WATER MIXABLE OIL PROJECT PALETTE

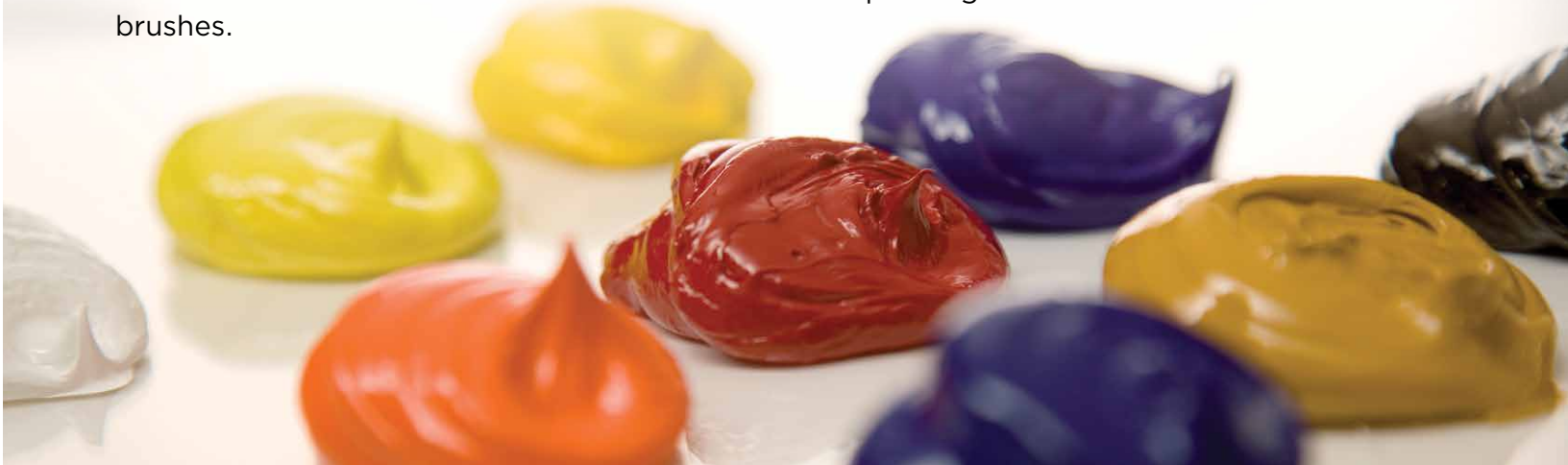
- Titanium White
- Yellow Light
- Yellow Ochre
- Raw Sienna
- Ultramarine Blue
- Magenta
- Burnt Sienna
- Ivory Black

CALLIA™ ARTIST BRUSHES

- 10/0 Liner Brush
- 2, 4, 6, 8, 10 Chisel Blenders
- 1/4" Mini Mop
- 1" Wash Brush

WATER MIXABLE OIL

I use Cobra Water Mixable Oil by Royal Talens for painting my projects. Cobra contains rich pigment, has no odor and is a creamy consistency. The paint is completely water mixable which means no solvents or thinners. I use water as a painting medium and to clean the brushes.



Surfaces & Surface Preparation

SURFACES

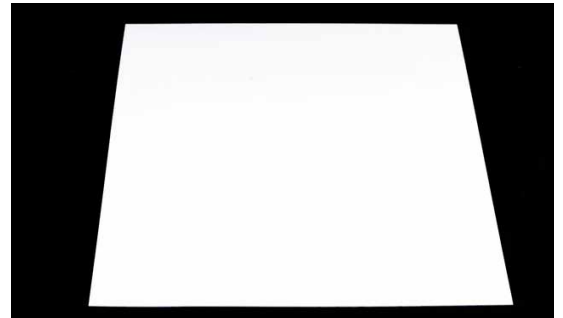
You can use a wide variety of painting surfaces. I have listed the most common types below, however, you can paint on just about anything if it is prepared properly. The wall decor projects in this book are an 8'x10' size.

SURFACE PREPARATION

In this book, all of the surfaces are prepared with a coat of Titanium White Acrylic. You can use brands like FolkArt, Amsterdam and DecoArt. Acrylic dries quickly, provides a consistent background color and makes it easier to clean off any smudges we may create while painting. After the acrylic is dry, you may transfer your design and paint with water mixable oil.

MULTIMEDIA ARTBOARD

Multimedia Artboard is a brand of very thin artboard which has a beautiful background texture. There is a textured side and a side with no texture. I prefer painting on the textured side.



PAINTABLE CARDS

Paintable cards come in an array of shapes, sizes and styles. You can use Mixed Media Cards, Creative Cards and Watercolor Cards. You can also use Multimedia artboard cut into specific sizes or other types of surfaces to turn into memorable gifts.



CANVAS

I prefer pre-stretched canvas. Pre-stretched means that the canvas has been wrapped around a wood frame and you can see the sides of the canvas. Canvas pads or oil paper may also be used.



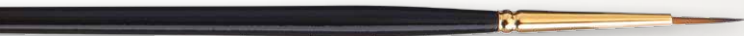
About Brushes

CALLIA™

Brushes are the tools you use to create your art, and it is essential to purchase quality brushes such as Willow Wolfe's **CALLIA™** Mixed Media Brushes. Inspired by traditional brush-making practices and the pursuit of new synthetics, **CALLIA™** is about the balance of invention and precise craftsmanship.

- **CAPTURES COLOR AND RELEASES WITH CONTROL**
- **DETAILED ARTISAN CARE AND CRAFTSMANSHIP**
- **CRUELTY-FREE 100% SYNTHETIC**

BRUSHES FOR THIS CLASS



10/0 LINER

Use for fine lines and details.



1/8 OR 1/4 MINI MOP (OPTIONAL)

The mops are a silky soft blend for softening brush strokes and adding final touches on a blended area.



2, 4, 6, 8, 10 CHISEL BLENDERS

Chisel blenders are similar to a flat brush but have shorter bristles. Shorter bristles allow for better control and a sharp chisel edge, yet are supple enough to blend softly.



3/4" OR 1" FLAT WASH BRUSH

The wash brush is for covering larger areas, basecoating, and applying soft layers of color.

BRUSH TIPS AND CARE

- Never allow paint to dry in the bristles.
- Do not allow your brush to rest in the water container. Laying the brush bristles-down for a period of time will cause the bristles to lose shape and will affect performance.
- Use Palmolive or Murphy's Oil Soap clean your brushes. As you clean, blot your brush on paper towel to remove excess water and color. When the brush is completely clear of paint, use a bit of soap to reshape the bristles.
- Store your brushes upright.
- When painting with mops, do not leave soap in the mop. Rinse the mop out completely with water and fluff before setting aside to dry.

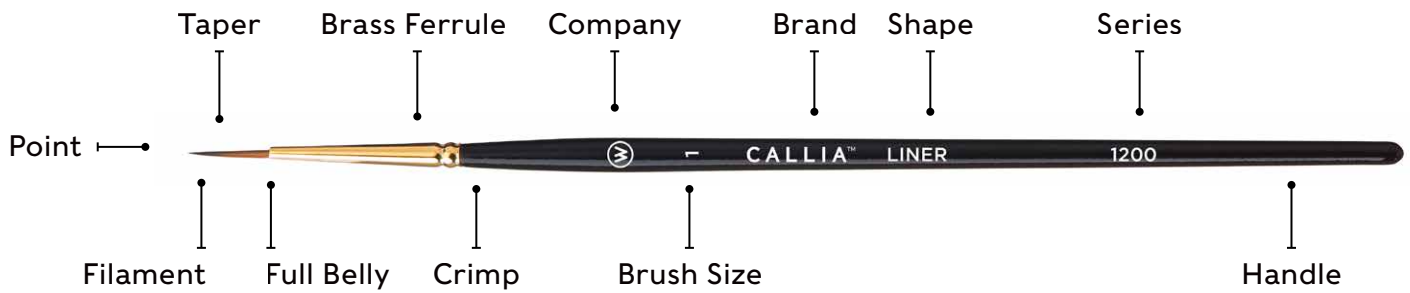
ANATOMY OF A BRUSH

CHISEL BLENDER



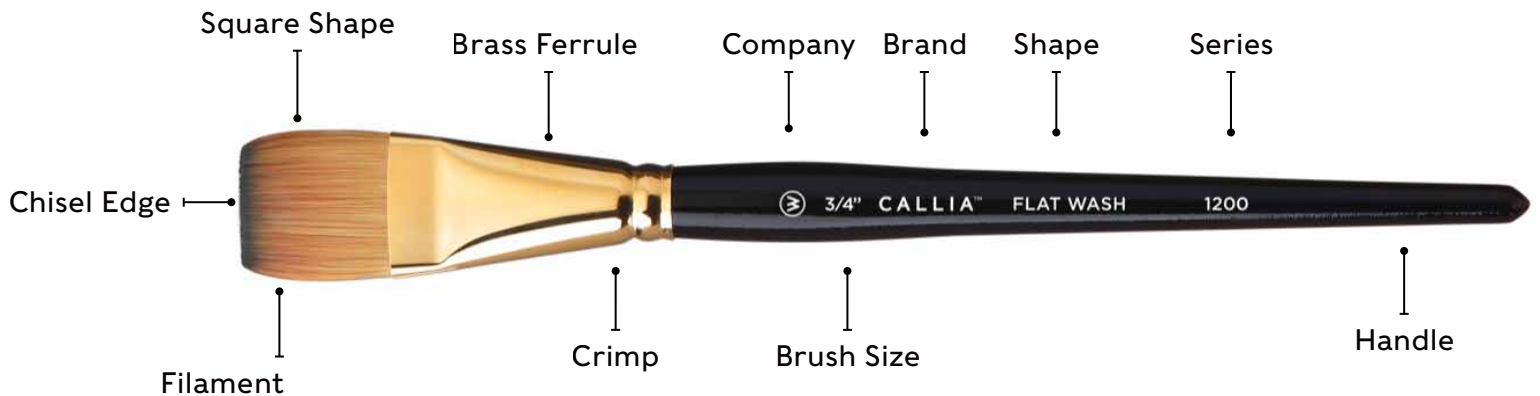
CALLIA™ Cultured Synthetic Sable Filaments

LINER

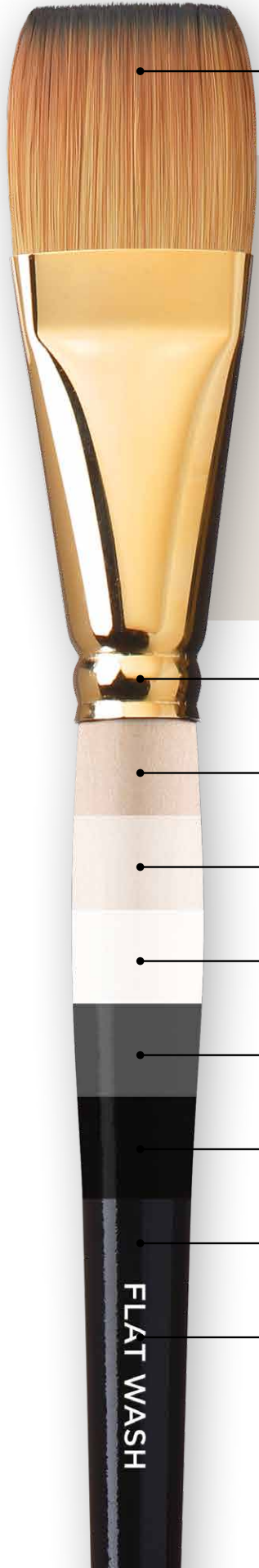


CALLIA™ Cultured Synthetic Sable Filaments

FLAT WASH



CALLIA™ Cultured Synthetic Sable Filaments



Cruelty-Free Blend

Obsessed With Details

CALLIA™ handles are created with six layers to prevent cracking and ensure your treasured tools stand the test of time.

Brass Ferrule

Wood Filler

1st Coat of Primer

2nd Coat of Primer

1st Coat of Black

2nd Coat of Black

Coat of Lacquer

Imprint

FLAT WASH



GENERAL PAINTING TERMS AND TECHNIQUES FOR WATER MIXABLE OIL

BRUSH MIX

To mix two or more colors together using your brush as opposed to a palette knife. Each time you load your brush the color may be slightly different, this adds variety to your painting. All the color mixes in this book are brush mixed except for those “pre-mixed” which are mixed with a palette knife.

DRY-WIPE (WIPE)

A technique used to clean the brush without rinsing it in water. Place your brush between the folds of the paper towel, press down and gently pull the brush out.

VALUE

Refers to how light or dark a color is.

HIGHLIGHT

The light value of your painting. It is built up in layers.

SHADE

To further shadow the dark area. Also built up in layers.

ACCENT

The addition of a color related to other colors in the composition. Accents help to add interest and tie design elements together.

VARNISHING

Refers to a coat applied to protect your painting. Let the painting dry for at least ten days. Wipe with a lint free cloth to remove any dust particles. Working outdoors, lightly spray painting with Krylon No. 7002 or Cobra Satin Varnish, holding the can at least 12” from surface. Wait until dry to the touch and spray again. Consecutively apply five to ten coats of spray.



BLENDING WITH WATER MIXABLE OIL

CHISEL BLENDING

Use this technique to create the appearance of choppy and fluffy feathers on birds.

Apply a sparse amount of paint and gently wiggle/blend with the chisel of the brush where the two values meet. Follow the growth direction of the subject you are painting and frequently wipe the brush on soft paper towels to remove excess paint.

PAT BLENDING

Apply a sparse amount of paint to surface. An excess amount will become sloppy and move around too much, causing the colors to become muddy. Gently touch and pull where two values meet using a very soft touch.

Dry-wipe the brush frequently to avoid muddying the color too much.

STIPPLE BLENDING

A blending technique used to merge values by tapping or pouncing with the tip of a brush. Apply the value by tapping or pouncing with the brush (stippling). Wipe the brush frequently. Add the highlight and shading values. Wipe the brush and tap to soften.

KEY TIPS FOR BLENDING

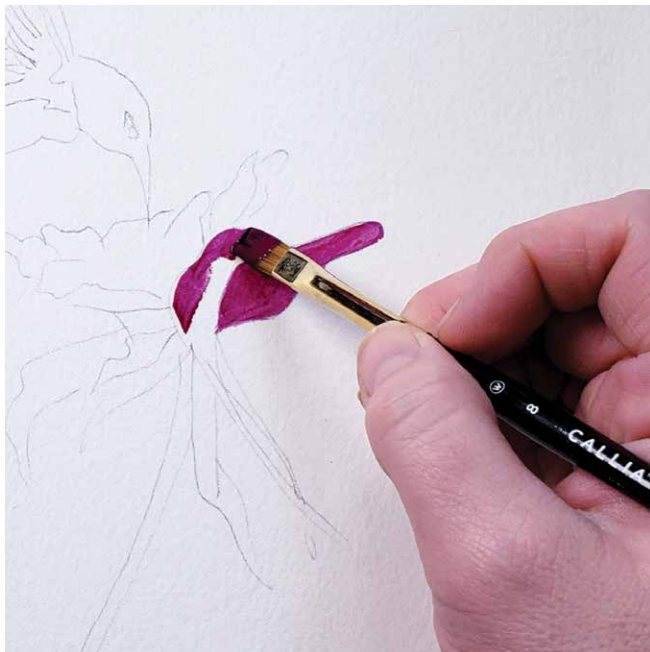
- Apply a Sparse Amount of Paint.
- An excess of paint will become sloppy and move around too much causing the colors to become muddy.
- Blend where two values meet.
- Use a very light touch.
- Dry-wipe the Brush frequently or too much of one value will be pulled into the other.
- Each layer of highlight/shadow should cover a smaller area than the layer before it.



TIPS & TECHNIQUES FOR WATER MIXABLE OIL

APPLYING PAINT

Use the largest brush that will fit in an area comfortably. Touch the brush into the puddle of paint you wish to use and pull the color out from the puddle. Fully load the brush, ensuring there are no heavy globs or ridges.



BRUSH MIXING

You can mix color with a palette knife, however, a majority of the time I prefer to brush-mix. Whenever you see a (+) between colors it indicates a brush mixed color. Simply load in the first color indicated and mix it in with the next color indicated. Don't worry about getting the 'perfect' color mix. There is no such thing! Each time you load your brush the color may be slightly different, this adds variety to your painting.

LINework

Linework is done by mixing water with your paint. If you only need a little bit of color, you can dip the liner in water and apply directly to the paint. If you need a larger amount, use a palette knife.

LINework

1. Use a small palette knife to apply water to your puddle of paint until you achieve a consistency similar to ink.



2. Load the liner at the edge of the puddle and roll your brush to a point.



3. Apply light pressure as you stroke or detail. The more pressure, the thicker your line will be.



APPLYING PATTERNS

Trace the pattern onto tracing paper or make a copy of the pattern if you would like to keep the original intact. You may also scale the image to fit your project when photocopied.

1. Position the design over the surface you have chosen, and tape it down lightly.



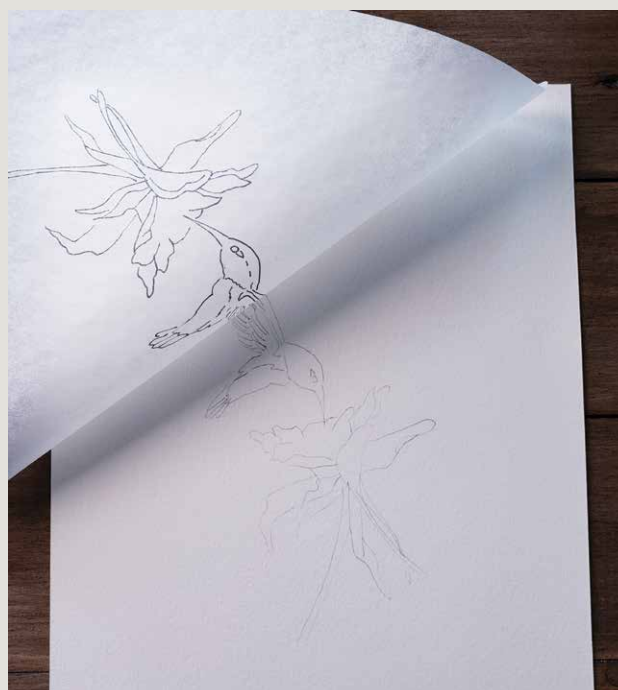
3. Use a pencil or stylus to trace the pattern.



2. Slide the transfer paper under the pattern.



4. Lift the paper and check that the design has transferred. Remove the tracing paper.







PROJECT #1

COSMOS

LEVEL

Beginner

SURFACE

8x10 Multimedia Artboard

ACRYLIC BACKGROUND

Titanium White and Ivory Black

WATER MIXABLE OIL PALETTE

Titanium White

Yellow Light

Magenta

Ultramarine Blue

Ivory Black

BRUSHES

CALLIA Artist Brushes

#2, #4, #6 and #8 Chisel Blender

¼" Mini Mop

10/0 Liner

1" Wash

OTHER SUPPLIES

Gray Transfer Paper

Stylus

Lazy Susan (optional)

Willow's Acrylic Clipboard (optional)

Satin Spray Varnish

PREPARATION WITH ACRYLIC

Use the 1" Flat Wash to basecoat the entire surface with Titanium White acrylic paint. Let dry. Mix a little Black Acrylic and Titanium White Acrylic to make a grey.

Basecoat the background a second time with White. While wet, slip slap a little grey into the corners. Add Black and slip slap into the corners, working in toward the center of the surface. Let dry. Transfer the design using the gray transfer paper.

PAINTING WITH COBRA WATER MIXABLE OIL

PRE-MIX VALUES

1. French Blue: Titanium White + Ultramarine + Ivory Black (10:1:1)
2. Willow Green: Yellow Light + Ivory Black + Titanium White (10:2:2)
3. Willow Green Dark: Willow Green + Ivory Black (1:1)

PETALS

TWO TOP FLOWERS

Basecoat the petals Titanium White. Shade at the base with French Blue and pat blend, walking the color toward the center of the petal. Deepen if desired. Paint trumpets on the edges of the petals and work toward the flower center. Further deepen with French Blue + a tiny touch of Ivory Black. Don't walk the shadow up too far. To paint the brighter flip, basecoat it with Titanium White. Shade the middle of the flipped area with French Blue. Basecoat the inner petal with French Blue.



BOTTOM FLOWER

One way to add depth and dimension is to brighten or deepen your flowers depending on where they are in the composition. Basecoat the upper petals of the bottom flower with Titanium White. Shade with French Blue + a touch of Ivory Black. Base the bottom petals with French Blue. Highlight with Titanium White. Shade the bottom petals if necessary, with French Blue + Ivory Black. Mop to soften if desired.

LEAVES

Base the little leaves with Willow Green. Shade with Dark Green and wiggle a touch to blend. Highlight with Titanium White using a small chisel blender and streaks of color. Thin Willow Green and use the liner to shape the tips of the petals. Thin Titanium White and use the liner to highlight the little leaves with dots and dashes.

CENTERS

Apply a dark value with Raw Sienna and the light value with Yellow Light. Deepen the shadow if desired. Tap to soften. Highlight with Titanium White. Add a hint of violet with Magenta + Ultramarine + a touch of Titanium White. Add dots with Yellow Light + a tiny touch of Magenta using a liner and thinned paint. Highlight with dots of Titanium White. Accent with dots of Magenta + Ultramarine + Titanium White.

STEMS

Use the chisel blender to complete the stems with Willow Green. Shade with Willow Green + Black. Highlight with Titanium White.

DETAILS

Thin Titanium White and highlight the petal edges of each flower.



PROJECT #2

PINK TULIP

LEVEL

Intermediate

SURFACE

8x10 Multimedia Artboard

ACRYLIC BACKGROUND

Titanium White and Ivory Black

WATER MIXABLE OIL PALETTE

Titanium White

Yellow Light

Yellow Ochre

Magenta

Burnt Sienna

Sap Green

Ultramarine Blue

Ivory Black

BRUSHES

CALLIA Artist Brushes

#2, #4, #6, #8 and #10 Chisel Blender

¼" Mini Mop

10/0 Liner

1" Wash

OTHER SUPPLIES

Gray Transfer Paper

Stylus

Lazy Susan (optional)

Willow's Acrylic Clipboard (optional)

Satin Spray Varnish

PREPARATION WITH ACRYLIC

Use the 1" Flat Wash to basecoat the entire surface with Titanium White acrylic paint. Let dry. Mix a little Black Acrylic and Titanium White Acrylic to make a grey.

Basecoat the background a second time with White. While wet, slip slap a little grey into the corners. Add Black and slip slap into the corners, working in toward the center of the surface. Let dry. Transfer the design using the gray transfer paper.

PAINTING WITH COBRA WATER MIXABLE OIL

PRE-MIX VALUES

We will use three values of Pink. To mix Pink:

1. Light Pink: Titanium White + Magenta + a touch of Burnt Sienna (1:1: a touch)
2. Medium Pink: Light Pink + Magenta (1:1)
3. Dark Pink: Magenta + Burnt Sienna (1:1)
4. Willow Green: Yellow Light + Ivory Black + Titanium White (1:1:10)

PAINT THE TULIP

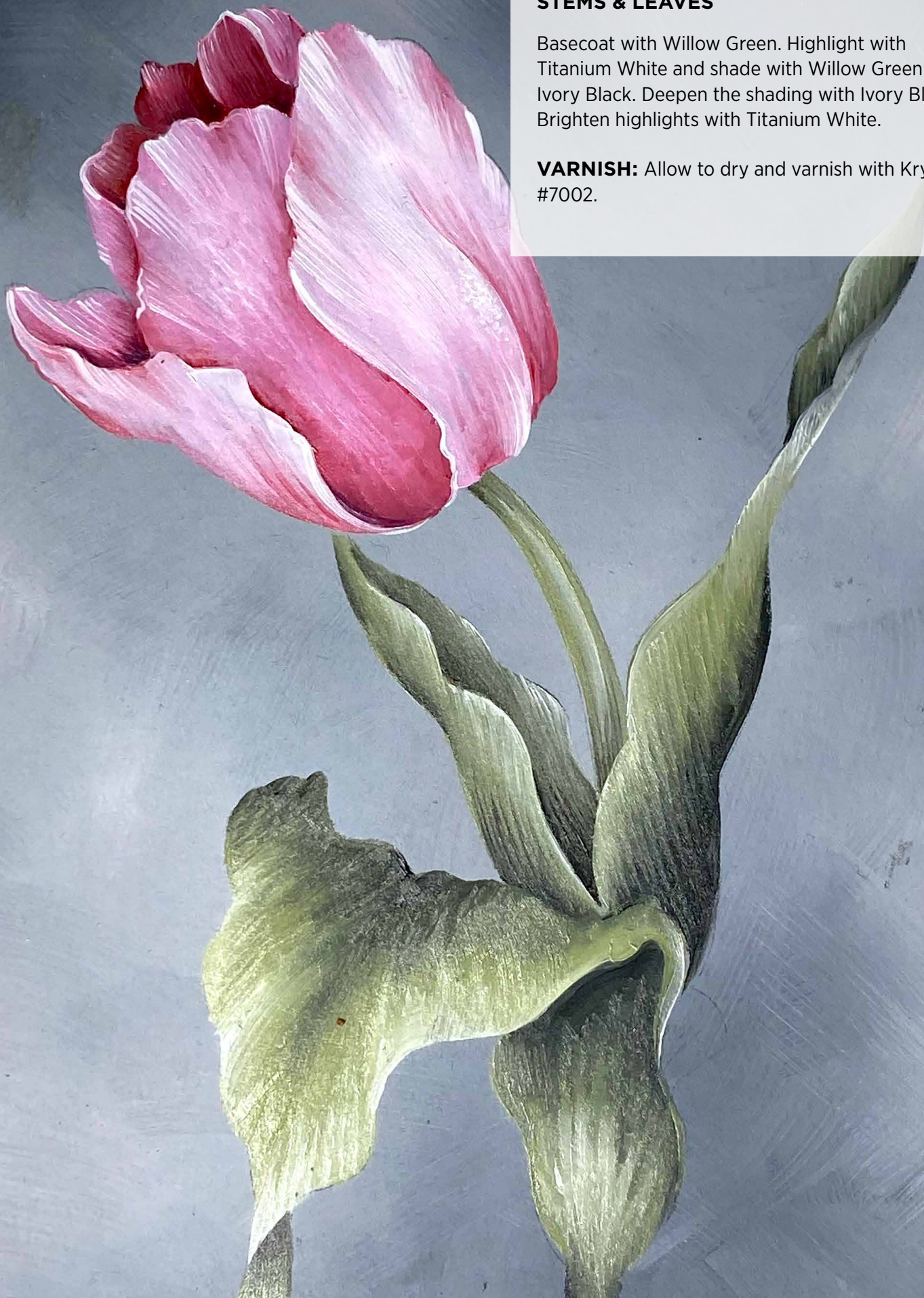
The goal with this Tulip is to use our values to create differences in background and foreground petals. The petals are pat blended and the color is walked out while blending to create movement.

The background petals are based with Medium Pink. Use Light Pink to highlight and follow that with Titanium White where desired. Shade with Dark Pink.

The two front petals are based with Light Pink. Shade with Medium Pink first and then Dark Pink. Highlight with Titanium White.

You may deepen areas in all petals with Magenta + a touch of Burnt Sienna + a touch of Ultramarine Blue.

Use a liner and Titanium White to create brighter highlights and you may also use a touch of Magenta + Ultramarine Blue and the liner to deepen the shading.



STEMS & LEAVES

Basecoat with Willow Green. Highlight with Titanium White and shade with Willow Green + Ivory Black. Deepen the shading with Ivory Black. Brighten highlights with Titanium White.

VARNISH: Allow to dry and varnish with Krylon #7002.

LINE DRAWINGS

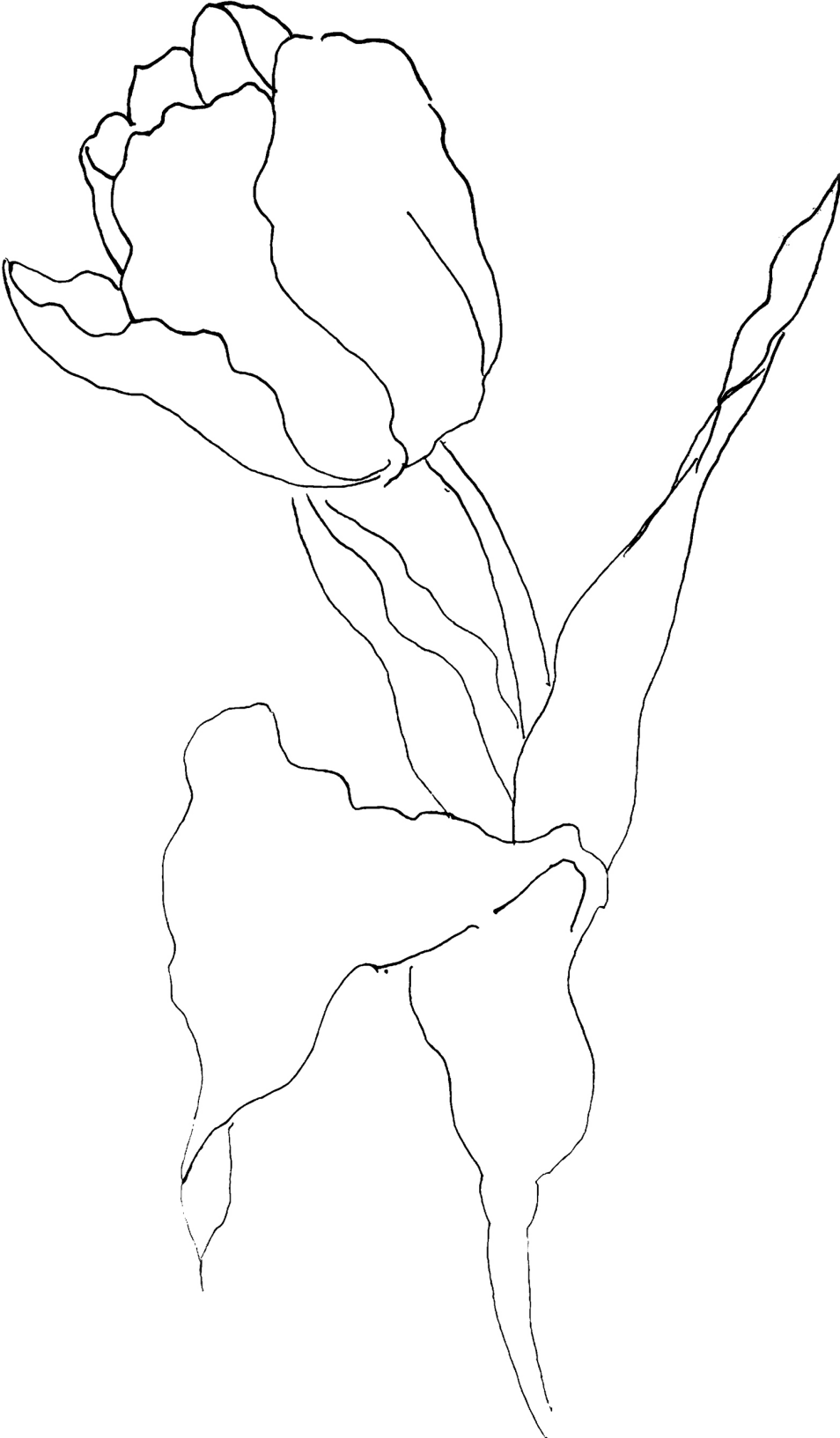
PROJECT #1 - COSMOS



Enlarge or reduce the pattern to suit your surface size.

LINE DRAWINGS

PROJECT #2 - PINK TULIP



Enlarge or reduce the pattern to suit your surface size.



CREATED BY ARTIST
WILLOW WOLFE™



FIND OUT MORE AT
WILLOWWOLFE.COM

WILLOW WOLFE INC. ©2020

Callia™, Willow Wolfe™, Awaken The Artist™, Dodo™, Moa™, What Does That Brush Do?™ and The Right Brush™ are trademarks used under license.