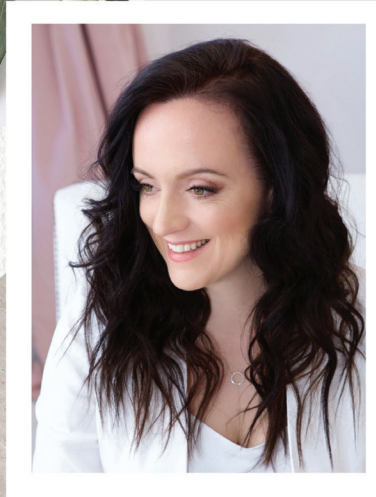


WILLOW WOLFE™  
AWAKEN THE ARTIST™



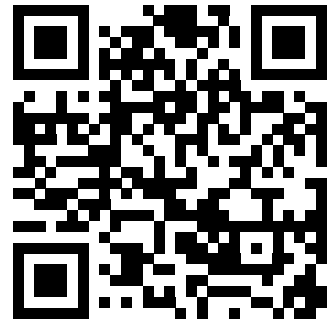
ONE MINUTE  
WATERCOLOR FLOWERS

CALLIA™ ARTIST BRUSHES  
ROUNDS & FILBERTS



**YOUTUBE LINK:** [HTTPS://YOUTU.BE/OLGPMRDBBEM](https://youtu.be/OLGPMRDBBEM)

Get ready to bloom with these simple stroke flowers. These strokes are great foundational elements that can be used in all your painting and help develop great brush control. Visit our YouTube channel to watch how these flowers are painted step-by-step.



# Supplies

## Callia Artist Brushes

Watercolor Flowers Brush Set

Set includes a 2, 6, 12 Round and 6 Filbert

## Van Gogh Watercolor Paint

Yellow Light

Permanent Red Light

Quinacridone Rose

Ultramarine Blue

Sap Green

## Paper

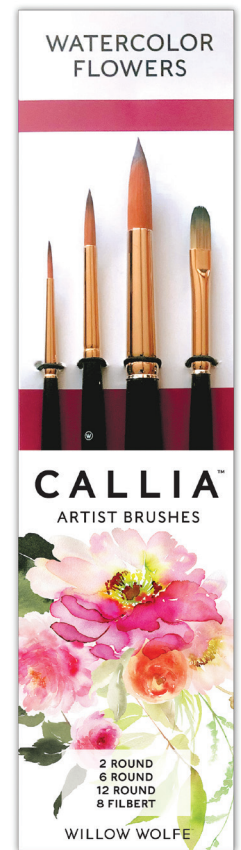
Watercolor Paper or Postcards

## Optional Supplies

Grey Transfer Paper

White Gouache

Pencil



# Brush Strokes

Basic strokes are the building blocks for watercolor florals. They build hand eye coordination and with practice, they are quick, easy, and create beautiful flowers.

## Comma Strokes

Begin by practicing your comma strokes. There is a left, right and a straight comma to practice. Try them with rounds and filberts.



Left



Middle



Right



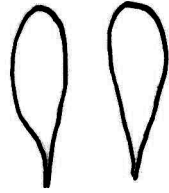
Combined



# Brush Strokes

## Backwards Comma

Watch our video to discover how backwards comma strokes are achieved, then practice backwards commas with your round brushes.



Single



Combined

## Painting Comma Stroke Flowers

We have included a little line drawing if you'd like to trace one out first as a guide. Once you practice your strokes, you'll want to try free handing your flowers to comfy. Try them in every color! To paint these comma stroke flowers, ensure your brush moves toward the center point of the blossom. This will ensure accurate growth direction.

Mix Perm Red Light + Yellow Light + Quin Rose to make an orangy/pink mix. Use lots of water and load your round or filbert brush. Pull strokes toward the center of the flower, while wet add dots of Quin Rose near the base of the petal to darken. Continue until all petals are painted. Tap a mixture of Quin Rose + Ultra Blue into the center. Let dry and tap White Gouache into the center. Paint little comma stroke leaves with a mix of Sap Green + a touch of Ultramarine Blue using the #2 Callia round brush.



# Painting Backwards Comma Flowers

To paint a backwards comma flower, ensure your brush begins near the center of the flower and finishes at the outer edge of the flower. These flowers have an outer edge with a jagged finish that's really wild and beautiful.

Mix Perm Red Light + Yellow Light + Quin Rose to make an orangy/pink mix. Use lots of water and load your round brush. Pull strokes away from the center of the flower, lifting abruptly. While wet, add dots of Quin Rose near the base of the petal to darken. Continue until all petals are painted. Tap a mixture of Quin Rose + Ultra Blue into the center. Let dry and tap White Gouache into the center. Paint little comma stroke leaves with a mix of Sap Green + a touch of Ultramarine Blue using the #2 Callia round brush.



## Line Drawings

I use transfer paper to trace out my designs. You could also draw circles on your page with a center dot to act used to shape, form and direction.

